



POOWONG CS NEWS

INTEGRITY | GROWTH MINDSET | RELATIONSHIPS
OPENNESS | WELCOMING & INCLUSIVE



ISSUE 2

Mr Smethurst's Report

Dear parents/carers,

Well, what a big week it's been at PCS. Professional development for staff, Peer Mediation learning for the Year 5 and 6 students, our Science & Sustainability green thumbs are making their mark on the school and the 'Outdoor Cinema Night & Mega Raffle' this Friday. Please see the attached advertisement.

Professional Learning Communities

In 2023, Poowong Consolidated School will commence their Professional Learning Community (PLC) professional development. Professional Learning Communities (PLCs) are an approach to school improvement where groups of teachers work collaboratively at the school level to improve student outcomes. Working as a PLC is a proven way for schools to increase student learning by creating a culture that is:

- Focussed on continuous improvement by linking the learning needs of students with the professional learning and practice of teachers
- Committed to professionalism

Fuelled by collaborative expertise

School Council Nominations – Closed

Thank you to parents that completed the nomination process for the available positions on the School Council. Nominations have now closed and we'll shortly announce the appointments.

Emergency Management Procedures

All schools are required to have an emergency management plan which includes a variety of processes for handling an emergency. These vary greatly depending on the type of emergency and can include; evacuation offsite, evacuation onsite, lockdown and a shelter-in-place. We have a practice emergency drill each term to analyse our processes and ensure they are as efficient as they can be. Students have the process explained to them and are supported by the staff throughout the process.

Please note that in the event of the school having to enact one of the emergency management procedures, our number one priority is ensuring that all students are safe as per our duty of care. If you are concerned at any time that your child has been affected by one of these procedures, please let their classroom teacher know so that we can put some additional supports in place.

Parent Morning Tea

Parents and carers are warmly invited to join us for our termly morning tea, after drop-off at 9:00am on Monday 27 February in the Staff Room. Come along and meet some fellow parents from other classes and learn about opportunities to become involved in school life. Looking forward to seeing you there.

Getting to Know You Meetings

It was wonderful to see a good number of parents/carers attend the face-to-face 'Getting to Know You' interviews. this week and we appreciate the re-organisation of family life to attend.

NAPLAN 2023

This year NAPLAN is being held in term 1 from March 15-27 for all year 3, 5, 7 and 9 students. This is significantly earlier than in previous years, which will allow our results to be provided much earlier in the school year. The teachers already have begun work on assisting students to become prepared for the assessments, not just so they can perform at their best, but also to reduce any anxiety it may cause. If you're worried about NAPLAN for your child, or if you have any questions please speak with your child's teacher or to the Principal.

Ambulance Costs

Please note that in the unfortunate instance that the school has to call an ambulance to attend your child, the cost is met by the family. With any serious injury we endeavour to contact the parent, guardian or emergency contact. However there are times when this is not possible and / or the nature of the injury calls for immediate assistance. The safety of your child will always be our first priority. The cost of ambulance transport can be daunting. Cost for children on excursions would be even higher and the cost of an air ambulance should that be necessary, would be enormous. Ambulance cover can be taken out for around \$90.00 per family. More details can be obtained by phoning 1800 648 484. Some health funds cover ambulance as well. Clearly we hope that there will not be a need to call an ambulance, however, it is important for people to be aware of the huge cost associated with this service and the fact that it will need to be paid by the family concerned.

Regards
Michael Smethurst
Principal



Principal Award



WEEK 3

(L to R): Laney, Matthew H., Oskar, Matthew C., Lucas and Matilda.



WEEK 4

Back row (L to R): Lilianah, Ruby and Benson
Front row (L to R): Evie, Zayn and Liv

February

SUNDAY	MONDAY	TUESDAY	WEDNESDAY	THURSDAY	FRIDAY	SATURDAY
			1	2	3	4
5	6	7	8	9	10	11
12	13	14	15	X	16	17
18	X	20	21	22	X	23
24	X	26	27	28		

papertraildesign.com

March

SUNDAY	MONDAY	TUESDAY	WEDNESDAY	THURSDAY	FRIDAY	SATURDAY
			X	1	2	3
4	5	6	7	8	9	10
11	12	X	13	X	14	X
15	16	X	17	18	19	20
21	22	X	23	24	25	26
27	28	X	29	30	31	

papertraildesign.com

April

SUNDAY	MONDAY	TUESDAY	WEDNESDAY	THURSDAY	FRIDAY	SATURDAY
						1
2	3	4	5	X	X	6
7	8	9	10	11	12	13
14	15	16	17	18	19	20
21	22	23	X	X	X	24
25	26	27	28	29	30	31

papertraildesign.com



POOWONG
CONSOLIDATED SCHOOL

IMPORTANT DATES

16th February

District Swimming at Korumburra

16th February

Book Club orders due

20th February

'Getting to know you' meetings

20th February

Pancake Day

24th February

Outdoor Movie Night

24th February

Divisional Swimming Korumburra

27th February

Parent Morning Tea

1st March

House Swimming Sport

13th March

Labour Day—Public Holiday

15th –17th March

Naplan Grades 3 & 5

21st March

School Photos

29th March

School Athletics Day

6th April

Last day of term

7th April

Good Friday

24th April

Term 2 Starts - Curriculum Day

25th April

ANZAC Day - Public Holiday



District Swimming



A huge congratulations to all our PCS competitors who attended the District Swimming at Korumburra last Thursday. We are beyond proud to have you all represented our school.

A further congratulations to Pallas and Bridget who will continue on to the Divisional Swimming held at Korumburra on the 24th February. We wish you all the best girls.

A special mention to Imogen, who even though came second, missed out on continuing on. Look out next year, Imogen will be back!!





Pancake Day



On Monday 20th February, PCS celebrated Pancake Day at School. The lovely ladies from the Uniting Church in Poowong, hosted the day by volunteering to cook and serve delicious pancakes to our students. A gold coin donation was requested on the day and the proceeds were given back to the United Church.



Pancake Day is also known as Shrove Tuesday in the Christian calendar. and it is the last day before Lent. Lent is traditionally a time for fasting. Shrove Tuesday or otherwise, Pancake Day, is the last opportunity to use up foods such as eggs, sugar and fats before the fast begins.





What's happening in Science..



Last week in garden club

"We wrote down all the plants that we want in the garden and we took some soil out and put it in a jar and put water in it too. We were testing the soil."

- Evie L Gr 1

"I want to do gardening and put seeds that I like. Like tomatoes, strawberries, peas, cucumbers and raspberries."

- Matilda Gr 1

"We should do a worm farm and somewhere for compost!"

- Sasha Gr 1



This week in sustainability

By Lila (Grade 4)

Me and my team were getting apples for the compost. It was really fun! We got some buckets and some rakes and we nearly filled up all of the buckets! I hope we can do it again.



"I carried the wood down. It was heavy and hard but it was really fun and I want to do it again."

- Coby Gr 4

Developing our school garden and vegetable garden will be a slow sustainable process.

At times you may see different items, materials or jobs listed here. If you are ever able to donate, help out or can share helpful suggestions/information please let Mrs Dobie know.

We are in need of:

- grass clippings

If you are mowing the lawns this weekend we would appreciate some being dropped at the bottom double gate near the vegetable garden beds.

Currently in the garden we are:

Soil testing, building our compost bins and planting cover crops

All welcome to join in. Wednesday 2nd Half Lunch

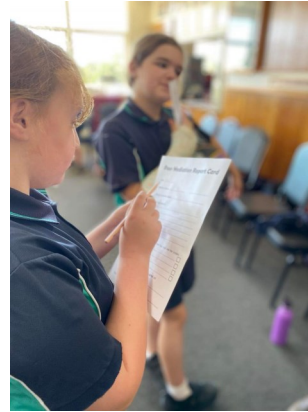


Peer Mediation Training



On Monday 20th and Tuesday 21st March, the Grade 5 and 6's attended a Peer Mediation Training session at Nyora Football Club rooms.

The Peer Mediation Training is designed to assist our students with developing additional skills such as peer support, communication, leadership and mediation.



Slip, Slop, Slap, please remember your hat!!



Although the weather hasn't been as hot as we'd like, the UV's are still high. Please ensure that your children have a hat to wear outside during play. Hats are compulsory for outdoor play during Term 1 and Term 4.



TheirCare
for your Kids, for you



POOWONG CONSOLIDATED SCHOOL OUTDOOR CINEMA NIGHT FRIDAY 24TH FEBRUARY

GATES OPEN AT 6PM | MOVIE AT 8PM

TICKETS \$10

ORDER ONLINE

trybooking.com/CBCGX

OR CONTACT THE SCHOOL ON (03) 5659 2356



Disney
ENCANTO

BYO PICNIC
BLANKETS
FOOD & DRINKS
AVAILABLE
ON THE NIGHT



MEGA RAFFLE WILL BE DRAWN ON THE NIGHT!

Poowong Consolidated School - 5 Gardner Lane, POOWONG

FINANCIAL ASSISTANCE INFORMATION FOR PARENTS

Every Victorian child should have access to the world of learning opportunities that exist beyond the classroom. The Camps, Sports and Excursions Fund helps ensure that no student will miss out on the opportunity to join their classmates for important, educational and fun activities. It is part of making Victoria the Education State and the Government's commitment to breaking the link between a student's background and their outcomes.

CAMPS, SPORTS & EXCURSIONS FUND (CSEF)

School camps provide children with inspiring experiences in the great outdoors. Excursions encourage a deeper understanding of how the world works while sports teach teamwork, discipline and leadership. All are a part of a healthy curriculum.

CSEF is provided by the Victorian Government to assist eligible families to cover the costs of school trips, camps and sporting activities.

If you hold a valid means-tested concession card or are a temporary foster parent, you may be eligible for CSEF. A special consideration category also exists for asylum seeker and refugee families. The allowance is paid to the school to use towards expenses relating to camps, excursions or sporting activities for the benefit of your child.

The annual CSEF amount per student is:

- \$125 for primary school students
- \$225 for secondary school students

MORE INFORMATION

For more information about CSEF visit:

<https://www.education.vic.gov.au/about/programs/Pages/csef.aspx>

HOW TO APPLY

New applicants should contact the school office to obtain a CSEF application form or download from the website below.

If you applied for CSEF at your child's school last year, you do not need to complete an application form this year unless there has been a change in your family circumstances.

You only need to complete an application form if any of the following changes have occurred:

- **new student enrolments;** your child has started or changed schools this year.
- **changed family circumstances;** such as a change of custody, change of name, concession card number, or new siblings commencing this year.

Check with the school office if you are unsure.





South Gippsland Kinship Carer Support Group

Are you caring for a child or children because a family member or friend is unable to?
Would you like to meet others who are in a similar situation and will understand what you are going through?

Would you like to be with people who will listen to your stories without judgement?

All Kinship Carers are welcome and morning tea will be supplied

WHEN:

The second Thursday of each month
at 10am-12pm

WHERE:

Leongatha Community House
16 Bruce Street
Leongatha

RSVP FOR CATERING:

Anita on 0475 740 927 or
kinshipcaregippsland@berrystreet.org.au
or use the following link to register
<https://forms.office.com/r/GxK2dgVsBu>

2023 MEETING DATES:

9th of February
9th of March
13th of April
11th of May
8th of June
13th of July
10th of August
14th of September
12th of October
9th of November
14th of December



Believing In
Children,
Young People,
Families &
Their Future.



SOUTH GIPPSLAND SHIRE COUNCIL

You're Invited



Please join us for the official opening of the exhibition **THREADS**

THREADS 'the stories we weave' is an exhibition featuring artworks and objects within the theme of women and textiles/fibre arts.

The exhibition will run from 6 March to 1 May 2023 and showcase artworks and objects from the South Gippsland Shire Council and Coal Creek collections, and artists and makers working in the theme.

These objects will be exhibited alongside work by the Coal Creek Spinners and invited artists Sarah Parkes, Cresside Collette and Deborah Klein.

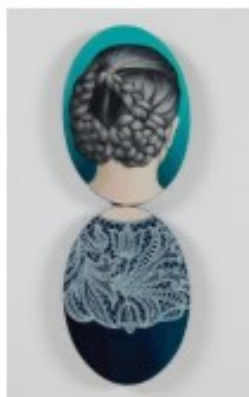
WHEN: Thursday 9 March

TIME: 6.30pm - 8.30pm

WHERE: Coal Creek Community Park and Museum, Silkstone Road, Korumburra

We look forward to having you at this exciting new exhibition for South Gippsland.

Please RSVP to coalcreek1@southgippsland.vic.gov.au or phone 5655 1811 by 5.00pm Wednesday 8 March



South Gippsland
Shire Council

COAL CREEK